

MULTI 4[®] Mini

TECHNOmark[®]
CREATIVE TRACEABILITY



4 DISTINCT
PREHENSIONS

ADAPTS TO
THE USER

360°
USE

THE NEW **ULTRA-COMPACT HEAD**

INNOVATIVE DESIGN

Its compactness and lightness makes of Multi4 Mini the ideal equipment for the marking of heavy, cumbersome and hard-to-reach parts in hand held configuration. Its unique shape ensures a weight distribution for a better handling. It facilitates the access to reduced areas and allows new marking positions.

SIMPLE

Put and mark! No need to set the distance between the equipment and the part anymore. The intuitive handling brings an increased comfort of use.

PRECISE

Designed around an X/Y cross table, this precision mechanics ensures homogeneous markings of constant quality and depth over the entire window. It is a strong asset for the marking and reading of Datamatrix codes.

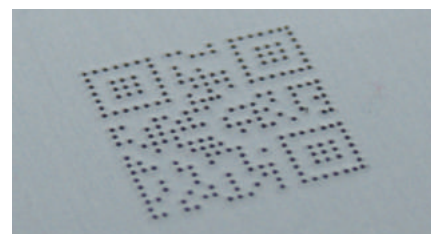
AUTONOMOUS

100% portable with its battery (as an option), it can be used indoors or outdoors.

MARKING APPLICATIONS



Marking on a steel tube



Marking of a QR code on
aluminium part

ULTRA COMPACT HEAD



TECHNICAL CHARACTERISTICS

- Marking window: 2.36"x1.18" (60x30mm)
- Head dimensions (L x W x H): 7" x 3.66" x 8.86" (178 x 93 x 225 mm)
- Head dimensions handle included : (L x W x H) :7"x3.66"x12.60" (178x93x320mm)
- Weight : 5,07 lb (2,3 Kg)



Compared to the Multi4 Hand held 50, the dimensions and weight are **divided by 2 !**

- Various marking modes : text, variable data, serial number, time stamp, logos and 2D codes
- Marking types: Straight, angular, circular etc...
- All materials with a hardness of less than 63HRC

NEW - CONTROLLED IMPACT (IIC)

This innovation allows to override the stylus/part distance setting. The force only is to be selected. With a fixed stylus/part distance, Intelligent Impact Control (IIC) guarantees an optimal spreading between the 6 forces allowing fine and precise, moderate or deep marking .

ERGO-DYNAMIC CONCEPT

The four possible prehensions offer the user an increased working comfort and an unparalleled access to parts.


GOOD TO KNOW

- The subset (marking head) is compatible with existing Multi4 range.
- For very deep markings we recommend the use of the 50, 120 or 200 marking heads

NEW GENERATION CONTROL UNIT

REDESIGNED KEYBOARD FRONT PANEL. NEW ICONS AND NEW SOFTWARE COLORIMETRY FOR EVEN MORE VISUAL COMFORT.

TECHNICAL FEATURES

- High resolution colour screen (640x480 px) with icon based navigation
- Intelligent handling of the marking 
- RS232 connection, 3 Inputs/4 Outputs, Ethernet (optional)
- 2 USB Device Port & HOST
- Embedded multilingual software (21 languages)
- Memory capacity of 40Mb can accommodate up to 20.000 stored marking files (40 characters, 1 line)
- Well designed ergonomics (locating foot and carriage handle)
- Fast updates in less than 2 minutes through USB port
- «Easy Shift « feature: allows to display text moving in the marking window
- Dimensions (L x W x h) : 14.57" x 8.47" x 5.47" (370 x 215 x 139 mm)
- Weight : 8.16 lb (3.7 kg) (including cable)
- Weight with the battery kit : 10.80 lb (4.9 kg)



ACCESSORIES AND OPTIONS

- Ethernet port
- Reading system
- Battery
- Storage case
- Software pack



CALENDAR OF EVENTS

This latest generation will be presented in more than **47 countries around the world!**



The entire list of fairs and all Technomark news can be found on our website: www.technomark-marking.com