

GEKA 
The steel working company

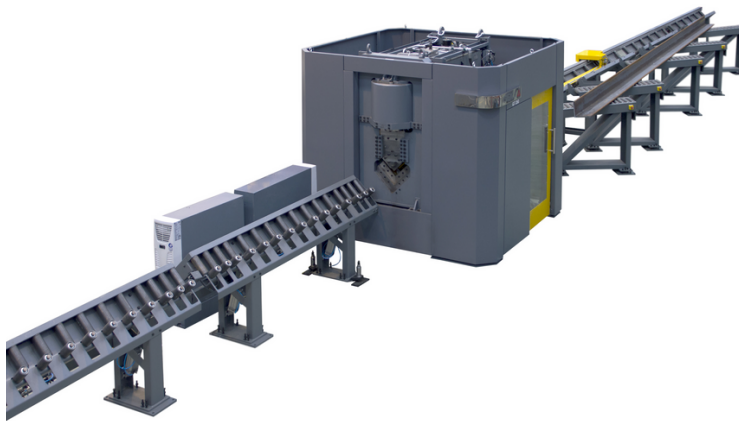
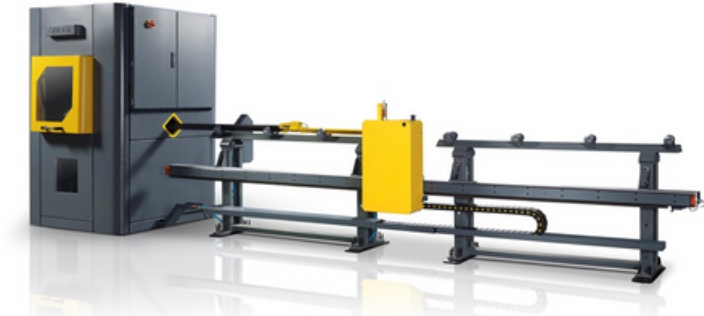
GAMMA SERIES

**CNC PUNCHING, SHEARING AND DRILLING
FOR ANGLES AND FLATS**



GAMMA TRACTION SERIES - GT SERIES

The GT series are machines designed for maximum output and processing quality when processing **angle bar, flat bar and U-profile**. The material is processed by the means of a pincher + carriage to optimize efficiency by processing the material with minimum scrap to ensure the best results.



INPUT CONVEYOR UNIT

- Material held and pushed with clamp.
- Rack & pinion system servo motor driven.



PUNCHING UNIT

- 6 punches (3 per leg).
- CNC-controlled backmark.
- Hydraulic hold down.



SHEARING UNIT

- Clean cuts without waste.
- Easy and quick access to blades.



MARKING UNIT

- CNC controlled positioning and marking selection with adjustable pressure valid for galvanizing.



DOUBLE DRILLING UNIT

- 8 tools (4 per wing).
- Maximum diameter 40mm.

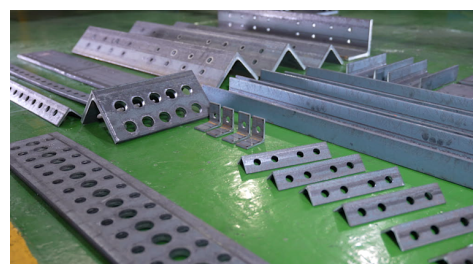
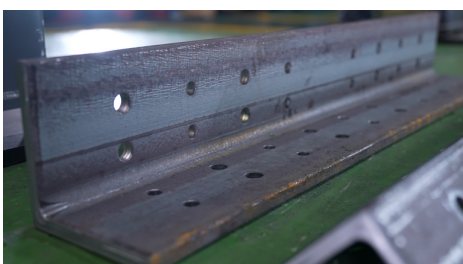


FULL CNC CONTROL

- Windows 10 based PC control.
- Standard remote assistance.

GENERAL SPECIFICATIONS

GAMMA TRACTION		GT-100	GT-150	GT-160	GT-200	GT-250
Angle processing (min) (45kg/mm ²)	mm	35 x 35 x 4	40 x 40 x 4	40 x 40 x 4	50 x 50 x 5	50 x 50 x 5
Angle processing (max) (45kg/mm ²)	mm	100 x 100 x 10	150 x 150 x 15	160 x 160 x 16	200 x 200 x 20	250 x 250 x 25
Flats processing (max) (45kg/mm ²)	mm	100 x 10	150 x 15	160 x 16	200 x 20	250 x 25
U-Channel processing (optional) (45kg/mm ²)	mm	-	0:00:00	0:00:00	0:00:00	0:00:00
Infeed	type	Pincher	Pincher	Pincher	Pincher	Pincher
Number of punches per leg	no.	1 x 2	2 x 2	3 x 2	3 x 2	3 x 2
Punching diameter (max)	mm	0:00:00	0:00:00	0:00:00	0:00:00	0:00:00
Punching power	tons	0:00:00	0:00:00	0:00:00	0:00:00	0:00:00
Shearing power	tons	0:00:00	0:00:00	0:00:00	0:00:00	0:00:00
Pressure marking 5 holders, 10 ch each	Std	Standard	Standard	Standard	Standard	Standard
Disc marking	Optional	40 characters	40 characters	40 characters	40 characters	40 characters
Drilling station	Optional	-	-	-	-	1 per leg w/4 tools
Operating software in Windows 10	Standard	LinePro Net	LinePro net	LinePro net	LinePro net	LinePro net
	Optional	LANTEK	LANTEK	LANTEK	LANTEK	LANTEK



GAMMA ROLLER SERIES - GR SERIES



The GR series are machines designed for maximum output and processing quality in the minimum space possible. It can work with 6 or 12-meter-long bars and the material is moved by the means of a roller to optimize efficiency in a reduced space. Though the material is moved by a roller infeed, the customer can use GEKA's patented Minimal Waste System to ensure a minimum waste per bar, reducing the scrap to virtually zero.



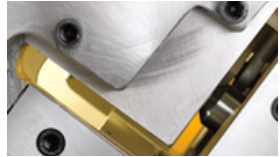
INPUT CONVEYOR UNIT

- Servo motor-driven tracking roller.
- Independent encoder.
- Feeder tracks at each end of the line.



PUNCHING UNIT

- Up to 3x punches per leg 31mm diameter.
- CNC-controlled backgauge.
- Hydraulic hold-down.



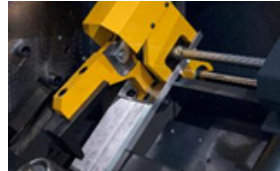
SHEARING UNIT

- Clean cuts without waste.
- Fast and easy access to blades..



FULL CNC CONTROL

- Windows 10 based PC control.
- 15" Touch screen.
- Remote assistance as standard.



MINIMAL WASTE UNIT

- Allows processing full length of bars with no scrap.
- Automatically activated from CNC.
- Clamp holds material & pulls it out.
- Fast and easy access to blades.

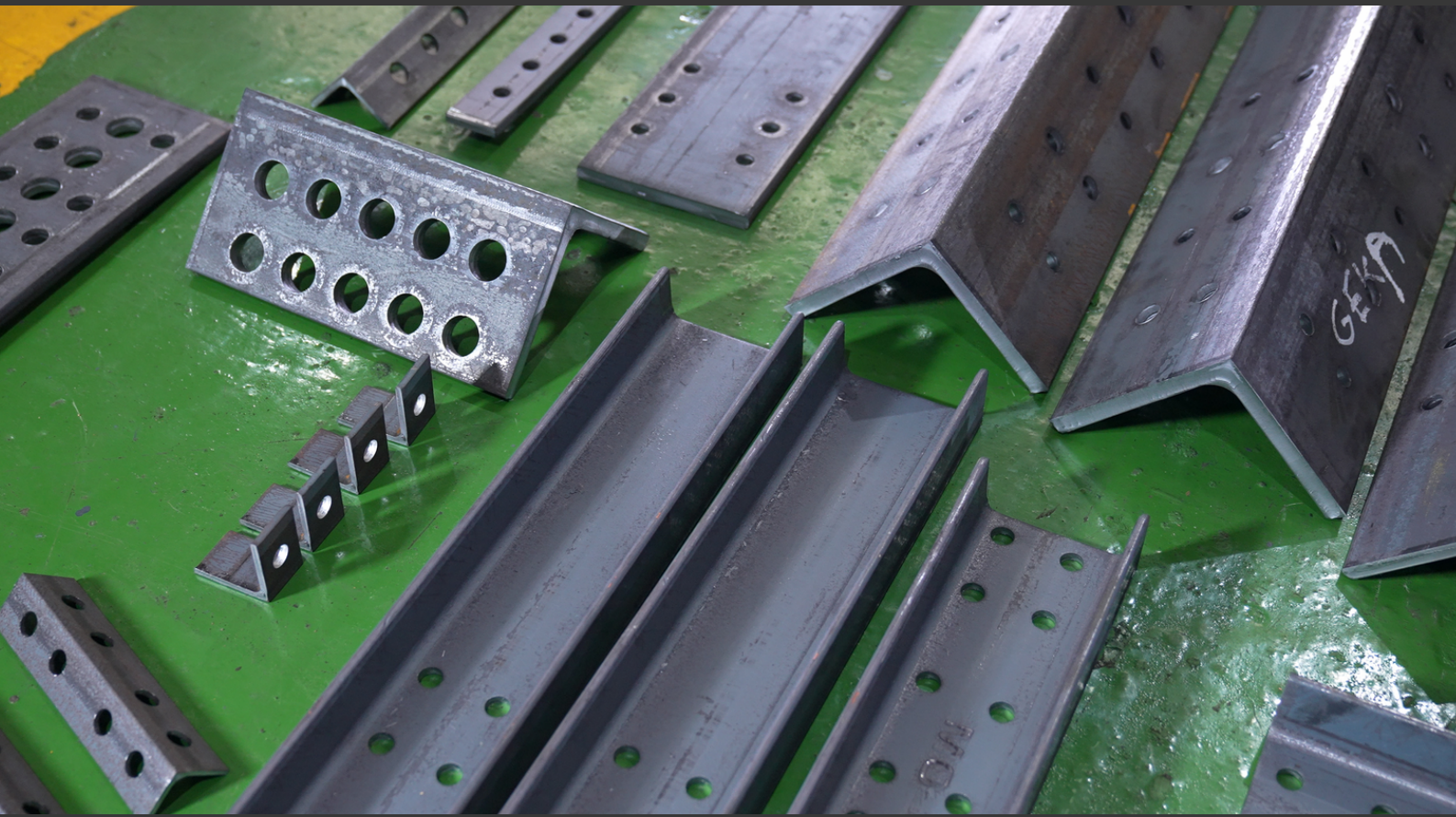


U-PROFILE PROCESSING UNIT

- This kit enables the machine to mark, punch (on the web) and shear the following U channels profiles:
U DIN 1026 – 80x45, 100x50, 120x55

GENERAL SPECIFICATIONS

GAMMA ROLLER		GR-80	GR-150	GR-160	GR-180
Angle processing (min) (45kg/mm ²)	mm	30 x 30 x 3	40 x 40 x 4	40 x 40 x 4	50 x 50 x 5
Angle processing (max) (45kg/mm ²)	mm	80 x 80 x 80	150 x 150 x 15	160 x 160 x 16	180 x 180 x 18
Flats processing (max) (45kg/mm ²)	mm	-	150 x 15	160 x 16	180 x 18
U-Channel processing (optional) (45kg/mm ²)	mm	-	120	120	140
Infeed	type	Roller	Roller	Roller	Roller
Number of punches per leg	no.	1 x 2	2 x 2	3 x 2	3 x 2
Punching diameter (max)	mm	25	31	31	31
Punching power	tons	34	80	80	80
Shearing power	tons	650	150	250	300
Pressure marking 5 holders, 10 ch each	Std	-	-	Standard	Standard
Disc marking	Optional	-	40 characters	40 characters	40 characters
Drilling station	Optional	-	-	-	-
Operating software in Windows 10	Standard	LinePro Net	LinePro net	LinePro net	LinePro net
	Optional	LANTEK	LANTEK	LANTEK	LANTEK



GEKA 

The steel working company

www.geka-group.com

Maquinaria Geka S.L.U. Polígono Zerradi 1, P.O.163 Oiartzun – Spain, E-Mail address: sales@geka.es

-  Gekagroup
-  Geka
-  Geka
-  Gekagroup
-  Geka_group