

OR-TS12025

Three Chuck Laser Tube Cutting Machine

Application industries: construction machinery, metal processing, bridge engineering, construction machinery, steel structure construction, etc.

Triple Chuck	Whole Tube Cutting	Zero Tailing
--------------	--------------------	--------------



Catalogue:

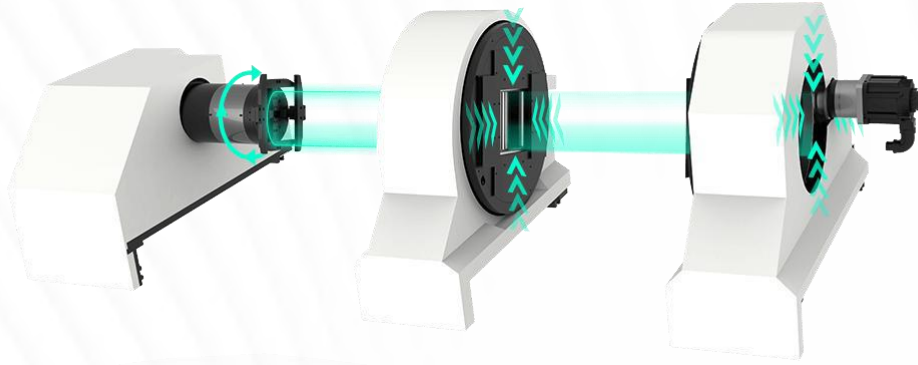
Information	TS12025	TS12020	TS6020
Power	1000-6000W	1000-6000W	1000-6000W
Tailing	0	0	0
Acceleration	0.8G	1.5G	1.5G
Chuck Speed	120r/min	120r/min	120r/min
Processing Range	Φ 15-250mm □15-250mm	Φ 15-230mm □15-230mm	Φ 15-230mm □15-230mm
Processing Length	12500	12500	6500
Positioning Accuracy	0.05mm	0.05mm	0.05mm
Running Speed	120m/min	110m/min	110m/min
Chuck Load Bearing	500kg	300kg	300kg
Tube Cutting Type	Round pipe, square pipe, rectangular pipe, angle steel, channel steel, I-beam, H-beam and so on.		

Parts:

Laser source	MAX/Raycus/IPG	Cutting Head	Raytools
Servo Motor	Inovance	Water Chiller	S&A
Reducer	FIEDLER(KOFON)	Control System	FSCUT5000A
Guide Rail	TWIN	Electronic Component	Schneider+Omron
Rack	TWIN	Proportional Valve	AirTac
Working Bed	plate and tube welding	Beam	Aluminium Profiles

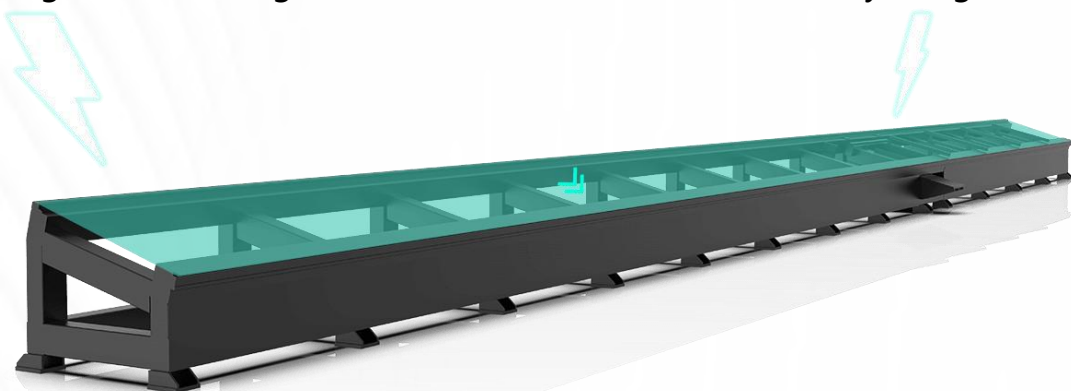
■ 1. Innovative triple chuck design

One-key self-centering fast clamping, chuck clamping force can be adjusted; three-point stabilized clamping, effective correction of pipe bending, improve cutting accuracy.



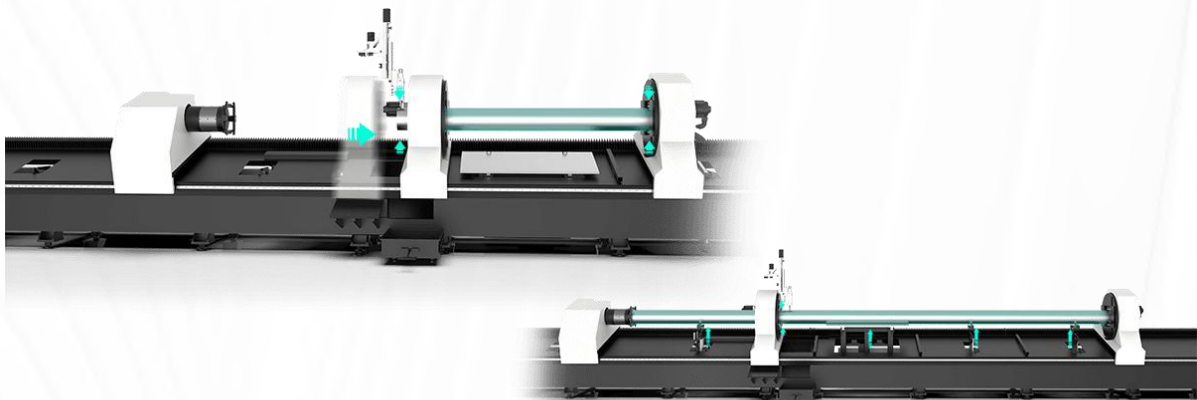
■ 2. Horizontal high and low rail bed structure

The overall stress layout is more reasonable, the load bearing is bigger, the stability is stronger, the pipe loading and unloading is more convenient, and the efficiency is higher.



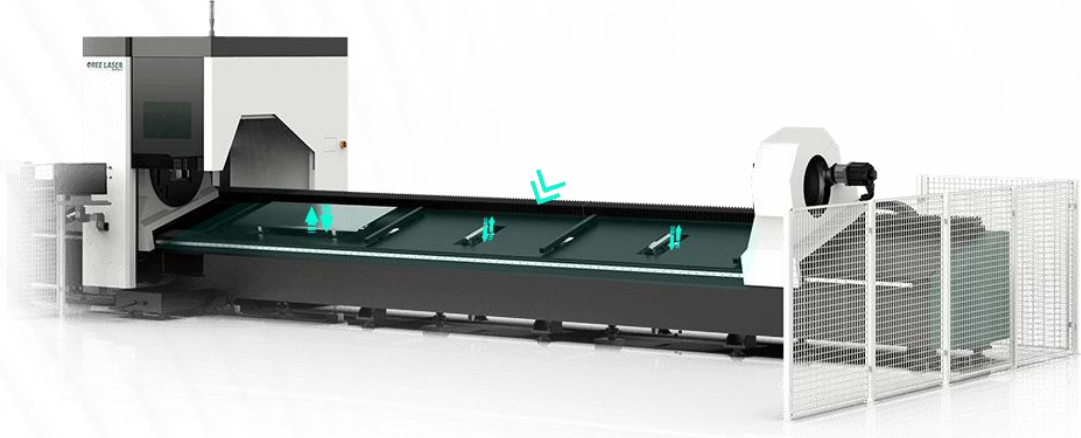
■ 3. Whole tube length tubing 0 tail stock cutting

The third chuck can clamp and pull the tube material, thus realizing the whole tube cutting of long tubes and realizing the real 0-tail material.



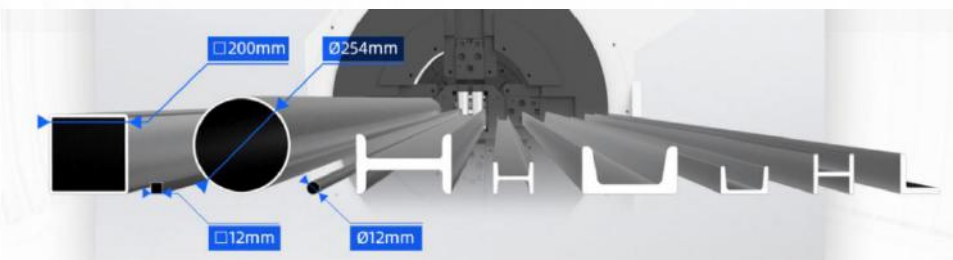
■ 4. Multi-point follower support

Multiple sections follow the support pipe, effectively preventing the pipe from sagging and realizing accurate cutting; follow the support slope down the material, unloading efficiently and more quickly.



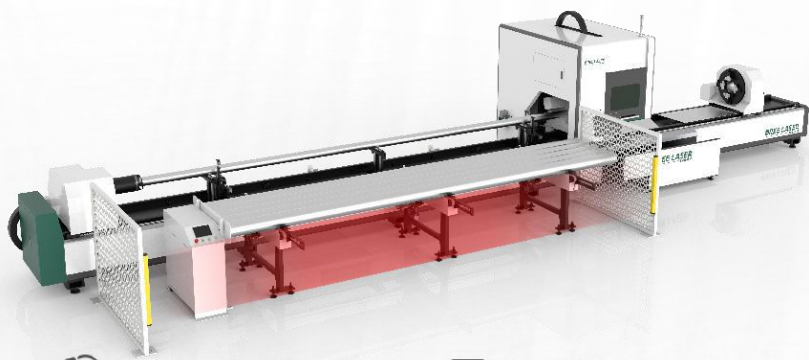
■ 5. Highly efficient processing of a wide range of tubes

Support 12 meters long workpiece processing, pipe processing diameter 15-350mm, single load up to 900kg, optional bevel cutting, to meet the angle, channel, I-beam, H-beam and other profile processing needs.



■ 6. Protective grating for greater safety

Setting up safety zones to safeguard equipment production.



■ 7.Unlimited potential, efficiency on the go

With semi-automatic loading unit, it is more efficient, convenient and stable;
Intelligent material dividing and loading, automatic material preparation during processing,
saving labor and time.

